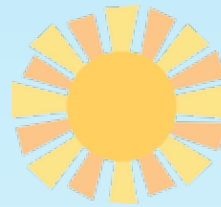


Get to Know Your Guiding Properties



Girl Guides of Canada—Guides du Canada (GGC) has the extreme good fortune (and had the foresight!) to own and lease a large number of camp properties. In BC, the area councils, together with the provincial council, maintain and manage the properties in their jurisdictions. Each property may be associated with a specific area or district, but the properties all over the province are yours to discover and explore. To that end, *Pipeline* has chosen to locate the properties in relation to the cities and towns we live in or near or are curious to visit, rather than in relation to the Guiding areas we identify with.

As we researched the properties for this article, the unique features of many of the sites had us talking about travelling to other parts of BC in order to stay on these properties and discover a new part of the province at the same time! We hope the information in this article will motivate you to do the same with your units.

With reasonable rental fees and bed subsidies, GGC properties make outdoor and travel experiences affordable. And it means not having to tent, cheek by jowl, at crowded public campsites, or having to compete with the public to make site reservations. Best of all, the camping properties are developed specifically for Guiding use, to provide empowering outdoor experiences for girls and women.

Maintaining and improving land and buildings is expensive, though. We may risk the properties being sold if their costs cannot be justified. The campsites must be used! There's at least one site within reasonable reach of most units. Better yet, plan to stay on a Guiding property outside your area and visit another part of the province.

The BC Camping Committee created the Camp Around BC Challenge to encourage members to visit at least one new-to-you property and another outside your area. To learn more about the challenge, go to the BC Guides website; select *Girl Engagement > Camping > Camping Challenges > Camp Around BC Challenge*.

And let *Pipeline* know about your unit's experience at the new-to-you facility or campsite. Send your story and photos to bc-pipeline@girlguides.ca.

Just a bit of housekeeping before you dive into the article. Most sites have more features than are highlighted here. We hope the teasers excite and intrigue you to visit the properties' websites and learn more about each camp.

The following icons tell you at a glance what amenities are offered:



tenting facilities (pads, platforms, grassy areas, clearings in trees) and total number of *overnight* guests they can accommodate



residential facilities (huts, cabins, bunkhouses, lodges) and total number of *overnight* guests they can accommodate



well equipped kitchen



flush toilets (no icon means outdoor latrines only)



potable water (tap, well or storage tank)



electricity; check with booking agent about availability on specific sites



capacity to hold large events such as district, area and pre-SOAR camps

A cabin or tent icon without a number indicates that information about the sites' amenities and capacities couldn't be confirmed. Regardless, because amenities may vary by season, always check the websites and confirm amenities and allowable numbers with the booking agents.

Last, although some websites describe their properties as accessible, this information is not included. Please discuss your group's needs directly with the booking agent.

I've decided which campsites I'd like to check out with a unit! Which one will you visit first?



Northern BC

Camp Darnall

- near Fort St. John
- riversnorthareagirlguides.ca/properties/
- contact: campdarnall.alcan.ggc@gmail.com

This 10-acre property is beside Charlie Lake and near Beatton Provincial Park. The site is home to bats, especially in the summer.



Guide Hall

- in Prince George
- riversnorthareagirlguides.ca/properties/

This accessible space has all the amenities, can hold 100 for events and features lots of GGC artifacts to explore.



Camp Little Big Hill

- in Quesnel
- riversnorthareagirlguides.ca/properties/
- contact: camping@riversnorthareagirlguides.ca

This large log building is heated by wood-burning fire. The property is the ideal location for units visiting Barkerville or travelling north.



Tyee Lake Campsite

- between Quesnel and Williams Lake
- riversnorthareagirlguides.ca/properties/

This affordable, rustic setting includes a fully equipped shelter and a large fenced area of open forest for outdoor activities and games. Canvas tents are available.



Camping Symbols



Tent



Cabin



Kitchen



Flush Toilet



Potable Water



Electricity



High Capacity



Camp Misconie

- near Dawson Creek
- riversnorthareagirlguides.ca/properties/
- contact: suzanne@eldoren.com

Take time to unplug on this 257-acre property surrounded by forest and the serpentine Kiskatinaw River. There's lots of space for games, and there are special features to explore like a fairy garden, wind chimes and a bone garden. The site has been a spring and summer camping treasure for more than 60 years.



Nukko Lake Campsite

- north of Prince George
- riversnorthareagirlguides.ca/properties/
- contact: nukkocampsite@gmail.com

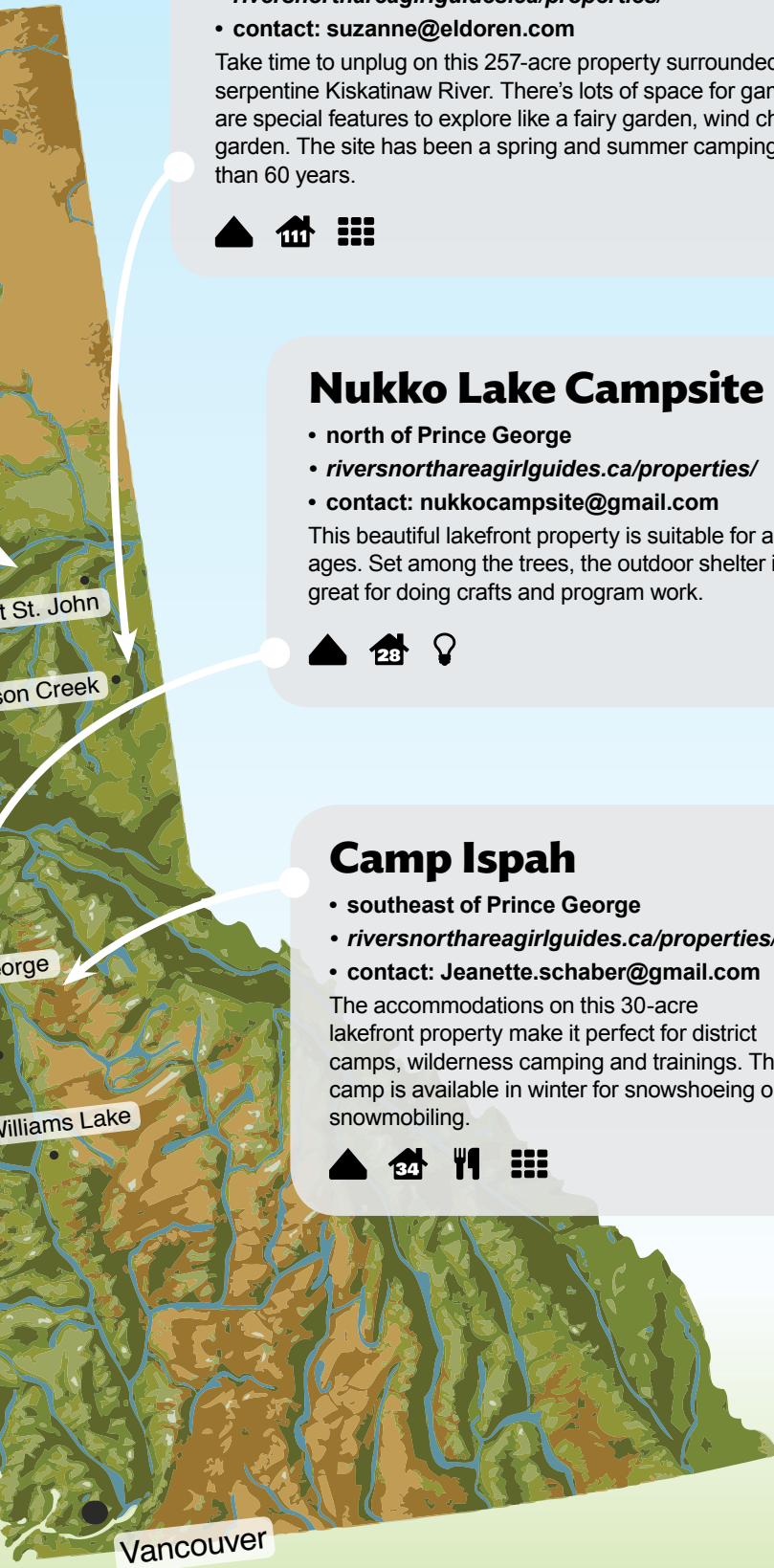
This beautiful lakefront property is suitable for all ages. Set among the trees, the outdoor shelter is great for doing crafts and program work.



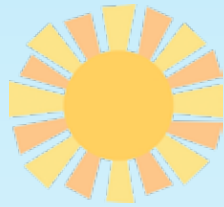
Camp Ispah

- southeast of Prince George
- riversnorthareagirlguides.ca/properties/
- contact: Jeanette.schaber@gmail.com

The accommodations on this 30-acre lakefront property make it perfect for district camps, wilderness camping and trainings. The camp is available in winter for snowshoeing or snowmobiling.



Vancouver Island



Duncan Guide Hall

- in Duncan
- ggcpacificshores.ca/properties/duncan-guide-hall

This residential facility is suitable for unit camps and is available between May and August. It's within walking distance of the Cowichan Aquatic Centre and Cowichan Valley Museum.



Camp Creina

- south of Duncan
- ggcpacificshores.ca/properties/camp-creina
- ggcpacificshores.ca/properties/camp-creina/booking

There are accommodations for campers of all ages and levels of experience on this 47-acre wooded property. An obstacle course, nature trails, a nature cupboard and river access (must provide lifeguard) are just some of the site's highlights.



Kingswood Camp

- on Saanich Peninsula
- svgirlguides.bc.ca/kingswood
- svgirlguides.bc.ca/camp-booking-information

Enjoy the feeling of being in the forest on this 28-acre property, only a short distance from Victoria. The upper campsite is surrounded by arbutus and Garry Oak trees. The camp borders Beaver and Elk Lakes, where canoes are available to rent.



Camp Jubilee

- in Shirley, near Sooke
- svgirlguides.bc.ca/jubilee
- svgirlguides.bc.ca/camp-booking-information

Located on 160 acres of forested land, this property offers cooking/dining shelters with wood stoves and features a salmon-bearing stream. The camp is within walking distance of Sheringham Point Lighthouse and French Beach, on the Strait of Juan de Fuca—ideal for whale watching!



Bowker Hall

- near Victoria
- svgirlguides.bc.ca/bowker-hall
- svgirlguides.bc.ca/camp-booking-information

With a 10-minute walk to one of Victoria's nicest beaches and a 15-minute transit trip to downtown Victoria, this site is a great base for adventures to BC's capital city.



Milnes Landing Camp

- near Sooke
- svgirlguides.bc.ca/milnes-landing
- svgirlguides.bc.ca/camp-booking-information

This site has been a Girl Guide camp for over 75 years. Located on the Sooke River Flats, the property offers easy access to the Sooke Potholes Regional Park swimming area (no lifeguards), Sooke Regional Museum and Galloping Goose Regional Trail. The foldaway canvas hammocks for sleeping in one of the cabins are unique.



Camping Symbols



Port McNeill Guide-Scout Hall

- in Port McNeill
- ggcpacificshores.ca/properties/port-mcneil-guide-scout-hall
- contact: rosietook@gmail.com

A log building built by volunteers, it has a backyard for outdoor activities, campfires and tenting. Port McNeill is ideally situated for West Coast experiences—hiking, beaches, karst formations, world-class whale watching at Telegraph Cove and the Whale Interpretive Centre. Only a short ferry ride away, you can learn about First Nations' culture and traditions in Alert Bay or explore Sointula. The Quatse Salmon Stewardship Centre, in Port Hardy, is within driving distance.



Powell River

Camp Orenda

- near Powell River
- ggcpacificshores.ca/camping-2/camp-orenda
- contact: MalaspinaStrait@ggcpacificshores.ca

This rustic and remote campsite is hike-in only. Because everything, including water, must be brought in, the site is ideal for gaining wilderness camping experience.



Vancouver

Duncan

Saanich Peninsula

Sooke

Victoria



Southwestern BC

Hollyburn Chalet

- on Cypress Mountain, West Vancouver
- westcoastarea.com/hollyburn.html

Access to this heritage log cabin is hike-in only (30–60 minutes). In winter, the cabin offers convenient access to snowshoe and cross-country ski trails, as well as a tubing park (ticket purchase required). The cabin has a wood stove and propane lights—and no one forgets the two-seater outhouse! Cannot be booked for overnight stays for Sparks or Brownies.



Phyl Munday Nature House

- in Lighthouse Park, West Vancouver
- lionsareagirlguides.ca/districts/west-vancouver/
- contact: judystringer@shaw.ca

A historic Second World War army hut set in a coastal forest, the site is perfectly located for meetings, hands-on nature study and easy access to hikes and to historic Point Atkinson Lighthouse. Girls and Guiders must walk in and out (15 minutes). Sleepovers are allowed on Friday nights only.



Camp Olave

- in Sechelt, on the Sunshine Coast
- campolave.com
- contact: campolavebookings@outlook.com

This year-round ocean paradise sits on 130 acres of forest and fields. The variety of sites and buildings makes the property suitable for all ages, from Sparks to Trefoil Guilds, and for all levels of camping experience. In summer, lifeguards are onsite. Besides waterfront activities, the property offers hiking, archery, low ropes and a nature house to explore. The campsite has a travel facilitator who can provide tips and recommendations.



Camping Symbols



Tent



Cabin



Kitchen



Flush Toilet



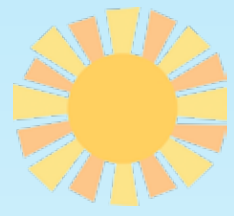
Potable Water



Electricity



High Capacity



Camp Kanaka

- in Maple Ridge
- girlguideslougheedarea.org/camp-kanaka/

This rural property is within easy driving distance of Vancouver. The variety of camping options, from a bring-your-own-tent site, to platforms, to the two lodges, make this a good choice for newer campers and for teaching camp skills to younger girls in a safe environment.



Camp McLanlin

- near Abbotsford
- fraserskiesgirlguides.com/camp-mclanlin/
- contact: campmacbooking@fraserskiesgirlguides.com

Come stay on the top of beautiful Sumas Mountain! Sites range from semi-wilderness to platform tents, from huts to cabins. Archery, bocce, Frisbee golf, gadget making and geocaching are just some of the fun activities available.



Woodward's Landing

- in Richmond
- contact: darlene_burns@telus.net

This large grassy field offers a large shared cook shelter and a picnic table on each site. The campground is conveniently located for walks or bike rides along Richmond's Dyke Road to historic Steveston.



West Coast Area Guide House

- in Richmond
- westcoastarea.com/guidehouse.html
- contact: fdaguidehouse@gmail.com

Built in the early 1900s, the house has been extensively renovated. Sleeping is on carpeted floors. The lush, fenced backyard can accommodate wide games or tents and features a stage with an easy access ramp.



Southcentral and Eastern BC

Camp Selhowtkan

- on Adams Lake
- thompsonnicolagirlguides.com/Camping.html
- contact: camp.selhowtkan@gmail.com

At this three-season semi-wilderness site, campers can enjoy swimming, canoeing, archery and hiking. Girls have fun taking mud baths on the clay beach in the summer! The camp is near the historic Flume Trail and Tsútswecw Provincial Park, site of one of the largest annual sockeye salmon runs in North America.



Camp Blue Point

- on Kootenay Lake, about 30 minutes from Creston
- kootenaygirlguides.com/camp-blue-point/
- contact: bluepointcamp@gmail.com

This 2-acre treed property is perfect for nature exploration, swimming, canoeing, kayaking and campfires on the beach. The outdoor site has six tent platforms, six firepits for cooking and an outdoor shower. The wood stove in the lodge keeps things cozy during inclement weather and winter camps. The Creston Valley Wildlife Management Area, an internationally important wetland, is a 45-minute drive from the site.



Camp Tillicum

- 15 minutes east of Vernon
- monasheegirlguides.com/camping/camp-tillicum/
- contact: camptillicumvernon@gmail.com

This rural campsite offers indoor and outdoor camping experiences year round. Its proximity to Silver Star makes it perfect for enjoying winter activities. Five acres of trees and a large grassy area offer lots of possibilities for wide games.



Vancouver

Victoria

Camping Symbols





Camp Rory

- near Rossland
- kootenaygirlguides.com/camp-rory/
- contact: kerra_clarkston@yahoo.ca

This beautiful, secluded wilderness camp offers a "Brownie" side (cabins, indoor toilets) and a "Guide" side (gravel pads, grassy field, outhouses). It's the perfect location for district or other group camps. Wild ginger and strawberries grow on the trails. Campers can sign their names on the Brownie cabin walls and bunk boards; girls love seeing the hundreds of names of those who have camped here over the decades.



Mountain View Camp

- 15 minutes from Cranbrook
- kootenaygirlguides.com/mountainview-camp/
- contact: mountainviewhallcamp@gmail.com

This rural property offers a cabin with all the amenities, as well as firepits, outhouses and lots of wooded area for tenting.



Cranbrook Guide Hall

- in Cranbrook
- kootenaygirlguides.com/cranbrook-hall/
- contact: mountainviewhallcamp@gmail.com

This large hall, with tables and chairs, can accommodate up to 60 people for meetings. There is access to a small grassy yard.



Camp Arbuckle

- on Okanagan Lake
- monasheegirlguides.com/camping/camp-arbuckle/

This property features residential buildings and a large flat field for tenting and games. Swimming to the floating wharf, canoeing, kayaking and paddle boarding are popular activities. The firepit near the lakefront is a special spot for campfires.

